



HUAWEI WATCH

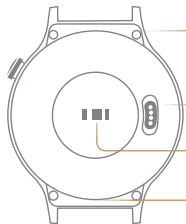
Appearance



Power button

Power on: Press and hold the power button until your watch powers on.

Power off: Press and hold the power button and then select **Settings > Power off**.



Microphone



Charger port



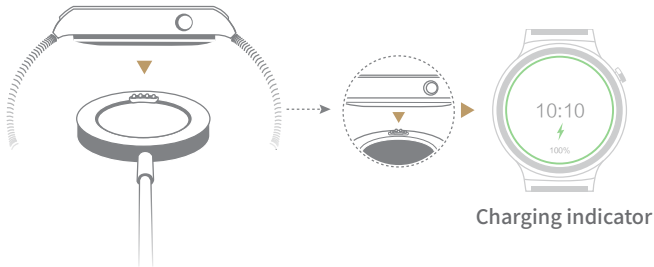
Heart rate sensor



Speaker

Your HUAWEI WATCH uses non-toxic materials which are not harmful to the body. If you have an allergic reaction, please consult a doctor immediately.

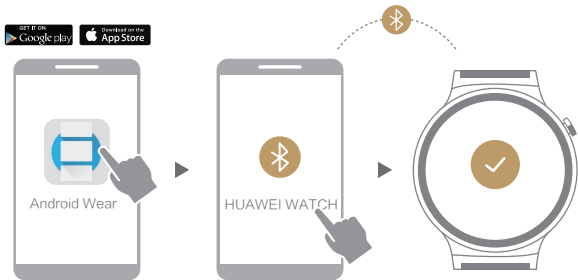
Charging



Align the charging port on your HUAWEI WATCH with the metal contacts on the charging cradle. Wait until the charging indicator appears on the screen.

- ⓘ Before charging, make sure the charging port is dry and the metal contacts are clean to prevent short circuiting or other issues from occurring.

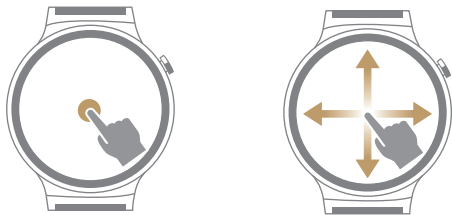
Pairing with your phone via Bluetooth®



On your phone, download the Android Wear™ app on Google Play™ or App Store. Then, follow the app's onscreen instructions to pair your HUAWEI WATCH with your phone. When they are paired, swipe on your HUAWEI WATCH screen to learn common gestures.

- ⓘ Requires a phone running Android™ 4.3+ or iOS™ 8.2+. Visit g.co/WearCheck on your phone to see if it's compatible. Supported features may vary between Android and iOS.

Common operating gestures



On your HUAWEI WATCH, you can touch, touch and hold, and swipe on its screen.

Swipe up	View card information.
----------	------------------------

Swipe down	View quick settings. Hide a card.
------------	--------------------------------------

Swipe left	View card menus.
------------	------------------

Swipe right	Delete a card, exit a card menu, or go back to the home screen.
-------------	---

Notification

 Message notifications



 Incoming calls



 Schedule notifications



 Alarms



Your HUAWEI WATCH will vibrate when it gives you a notification.

When you receive an incoming call notification, message, event, or exercise reminder on your HUAWEI WATCH, it will vibrate and display a card. Lift your wrist and swipe up on the card to read the notification.

For some notifications, swipe left on the card to reply or call back.

Ok Google™


"Search for nearby
restaurants"


"Remind me
of important
meetings"


"What time is
it in Berlin?"




"Call Tom"


"Weather?"


"Navigate home"

Lift your wrist and say "Ok Google" to trigger voice actions.

On the voice input screen, say your voice instructions or swipe up to check more voice service suggestions.


Keep your HUAWEI WATCH connected to your phone and make sure you have an available Internet connection.

 Some languages may not be supported.

Monitoring your fitness activities




Your HUAWEI WATCH can display motion data, intelligently recognize your motion status, and precisely record motion data of the whole day.

Touch  to start an exercise session and have your HUAWEI WATCH record the exercise time or calories burned.



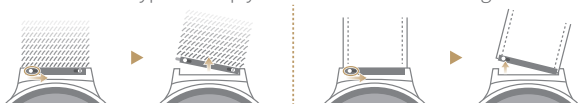
To ensure accurate heart rate measurement, refer to the figure shown above and wear your HUAWEI WATCH correctly. Wearing it too tight or too loose may affect data accuracy.

 The heart rate monitor should not be used for medical purposes.

More information

Adjusting your HUAWEI WATCH strap

We suggest adjusting your strap at a local watch repair shop since some more specialized tools are necessary for modifications. To remove it, determine the type of strap you have and refer to the figure below.



Huawei offers a range of straps for your HUAWEI WATCH.

To purchase one, contact the local reseller.

Caution

⊘ Do not forcibly bend your strap to avoid permanently damaging it.

Water resistance

ⓘ You can wear your HUAWEI WATCH when you're washing your hands or in the rain. But wipe it dry if it comes into contact with water.

⊘ Do not wear it when washing cars, swimming, diving, scuba diving, or showering.



For more information, go to **Android Wear > ⓘ > Help & feedback** on your phone.

Copyright © Huawei Technologies Co., Ltd. 2016. All rights reserved.
Android Wear, Android, Google Play, and Google are trademarks of
Google Inc.



31010UYA_04

This document is for reference only
and does not constitute a warranty
of any kind, express or implied.